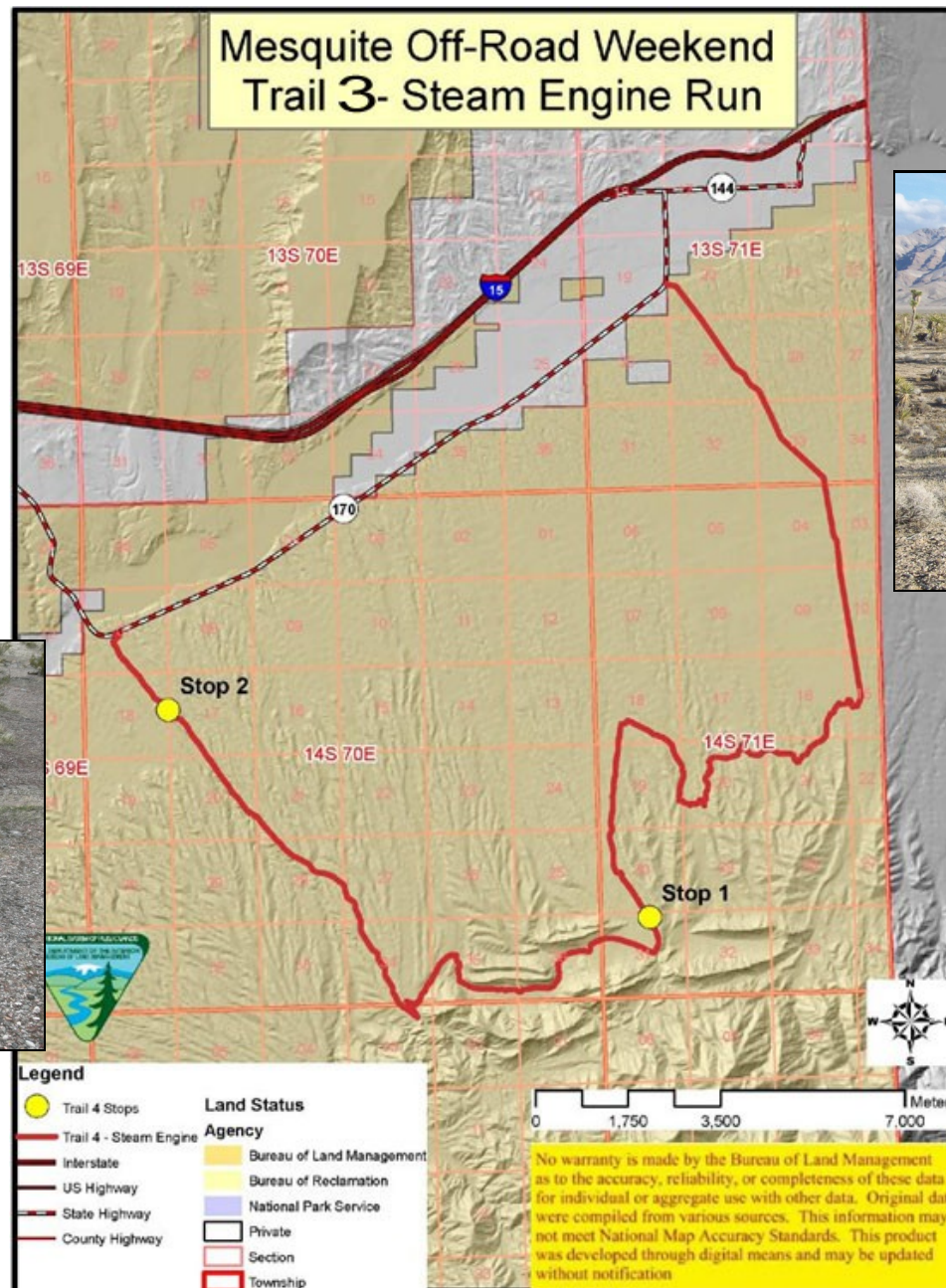


Along this route, you'll find many examples of these small rock dams built by the CCC (Civilian Conservation Corps) around the 1930s. These structures, strategically placed in the multitude of washes above Bunkerville, slowed the flood waters down and backed up small ponds of that water—thus preventing flooding of the homes and farms below plus providing precious water sources for wildlife and livestock.



The Mojave Yucca is a familiar plant, growing in the foothills of the Virgin Mountains; it prefers dry, rocky slopes and flats below 5,000 feet. When it blooms, beautiful stocks of white flowers tower above the spiny leaves.